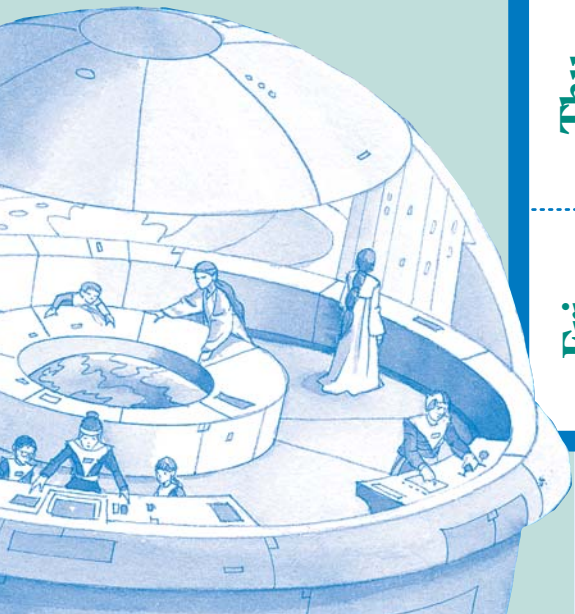


#8: *Midnight on the Moon*

Teaching Idea:

Familiarize students with our solar system and the planets, moons, and stars that comprise it. Identify earth as the third planet from the sun with a moon that orbits around it every month. As a class, construct a model of all the planets in the solar system and hang up to display.



May

Week of _____

	Reading	Writing	Spelling	Math	Science	Social Studies
Mon.						
Tue.						
Wed.						
Thu.						
Fri.						



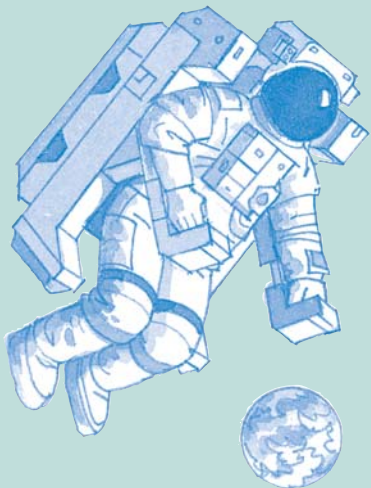
Space

May

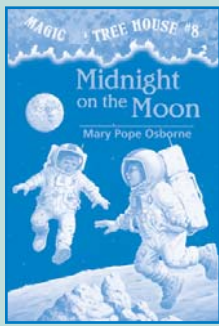
Week of _____

Teaching Idea:

Discuss how, beginning in the late 1950s, the U.S. and Russia were in a race to reach the moon. Ask students to research and identify key spacecraft launches during the period—including Sputnik, Vostok, Gemini, and Apollo—and highlight the first moon landing by Apollo 11 in 1969, then share their findings with the class.



	Reading	Writing	Spelling	Math	Science	Social Studies
Mon.						
Tue.						
Wed.						
Thu.						
Fri.						



#8: *Midnight on the Moon*

May

Week of _____

Teaching Idea:

Using the Weight on the Moon worksheet in the space unit on the Magic Tree House Classroom Club Web site www.randomhouse.com/teachers/magictH/weight.pdf have students calculate the weight of different objects on the moon. Then give students the weight of some moon rocks and have them calculate what they would weigh on earth.



	Reading	Writing	Spelling	Math	Science	Social Studies
Mon.						
Tue.						
Wed.						
Thu.						
Fri.						



Space

May

Week of _____

Teaching Idea:

Have students discuss the future of space travel and space stations after reading pages 121–125 in *Space*. Ask students to imagine what living in space would be like and have them create their own space villages using illustrations, clay, or other mediums, then share their models with the class.

	Reading	Writing	Spelling	Math	Science	Social Studies
Mon.						
Tue.						
Wed.						
Thu.						
Fri.						