

MAGIC TREE HOUSE®

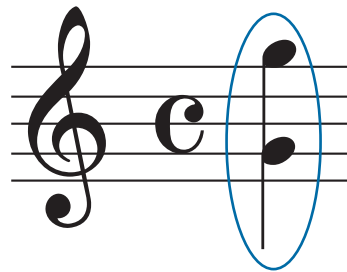
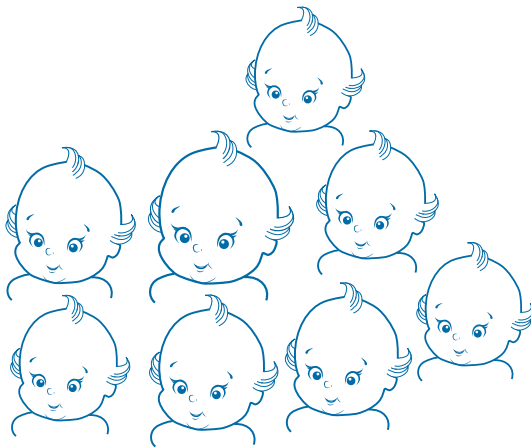
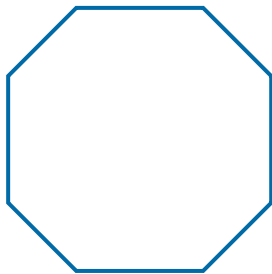
A MERLIN MISSION

Name: _____

Using Prefixes

Directions: In *Dark Day in the Deep Sea*, Jack and Annie encounter a giant octopus. The prefix OCT always refers to eight of something. Use the word bank to aid you in labeling the drawings below.

Word Bank		
Octagon	Octave	Octopus
Octuplets	Octet	



To read all of the Magic Tree House books, visit your local library or bookstore.