

PRINCESS MITTS

details

SIZE

To fit a woman's hand, size Medium

FINISHED MEASUREMENTS

Circumference: 8" (20.5cm)

Length: 7½" (18.5cm)

YARN



Classic Elite Yarns Princess (40% Merino, 28% viscose, 15% nylon, 10% cashmere, 7% angora; 150 yds [137m]/50g) 1 skein Milord's Madder #3485. If substituting, use 150 yds (137m) of 4-ply DK-weight yarn.

NEEDLES

One set of size 6 (4mm) dpns, or size to obtain gauge

Two pairs of 16" (40cm) circular needles size 6 (4mm), or size to obtain gauge

NOTIONS

Cable needle, stitch markers, a darning needle

GAUGE

24 sts + 32 rows = 4" (10cm) in cable pattern

22 sts + 30 rows = 4" (10cm) in St st

STITCH GUIDE

M1R

Make a right-leaning increase by picking up the bar between sts from back to front and knitting into the front of the picked-up st.

M1L

Make a left-leaning increase by picking up the bar between sts from front to back and knitting into the back of the picked-up st.

instructions

When you find a luxurious four-ply yarn and want to take a small amount out for a test-knit, give these elegant fingerless mitts a try. They require only one skein of Classic Elite Princess, and the yarn's full-bodied, four-ply formation renders the cabled braid and ribbing beautifully.

Notes: In the first cable in the Four-Rib Braid Cable Pattern (Row 1), decrease by p2tog in the center of this stitch. In Row 33, M1 in the center purl stitch by purling into the front and back of the stitch. This will add the p2 for the rib.

CUFF

CO 48 sts and join in round, being careful not to twist. Work 14 rows in (k2, p2) ribbing for cuff. Place marker at beginning of round and after st 24 to help distinguish cable section from ribbing section.

FOUR-RIB BRAID CABLE

For the right-hand mitt, you'll work the ribbing/thumb gusset on the first 24 sts and the Four-Rib Braid cable

pattern on the second 24 sts. For the left-hand mitt, you'll work the Four-Rib Braid cable pattern on the first 24 sts and the ribbing/gusset on the second set of 24 sts. Finish thumb on 3 dpns.

Begin Four-Rib Braid cable chart.

Always k2 before the patt and (k2, p2) after the patt sts.

At the same time, on Row 3 of Four-Rib Braid Cable chart, begin to shape the thumb gusset in the ribbing sts. Follow the Thumb Gusset Charts to incorporate the increases into the (k2, p2) rib. The increase sts for the gusset will be worked before and after the third st for the right-hand mitt, and before and after the third to the last st for the left-hand mitt. To help you see where to make your increases, place a marker before

designed by Jennifer Hagan

..... instructions continued



and after the M1 in the thumb gusset chart. As you increase, you will always slip the marker, M1, cont as established, and M1 before next marker.

Note: Work the first increase st by M1R and the second increase by M1L to create right- and left-slanting increases on either side of the gusset.

Once you have 13 sts between markers for gusset, work 3 more rows even and then place the gusset sts on a holder. Next row, CO 7 sts across the gap, and cont to end of round. Next round, begin decreases across top of thumb opening as follows.

FOR THE 7 CO STS:

Row 1: Ssk, k3, k2tog.

Row 2: Ssk, k1, k2tog.

Row 3: No decreases.

Row 4: S1 k2tog pssso.

Cont the ribbing as established for rest of mitt.











On the cable section, cont Cable Pattern through Row 34. Then work (k2, p2) rib for 6 rows or until desired length. Try on the mitt periodically to ensure a good fit. BO all sts evenly.

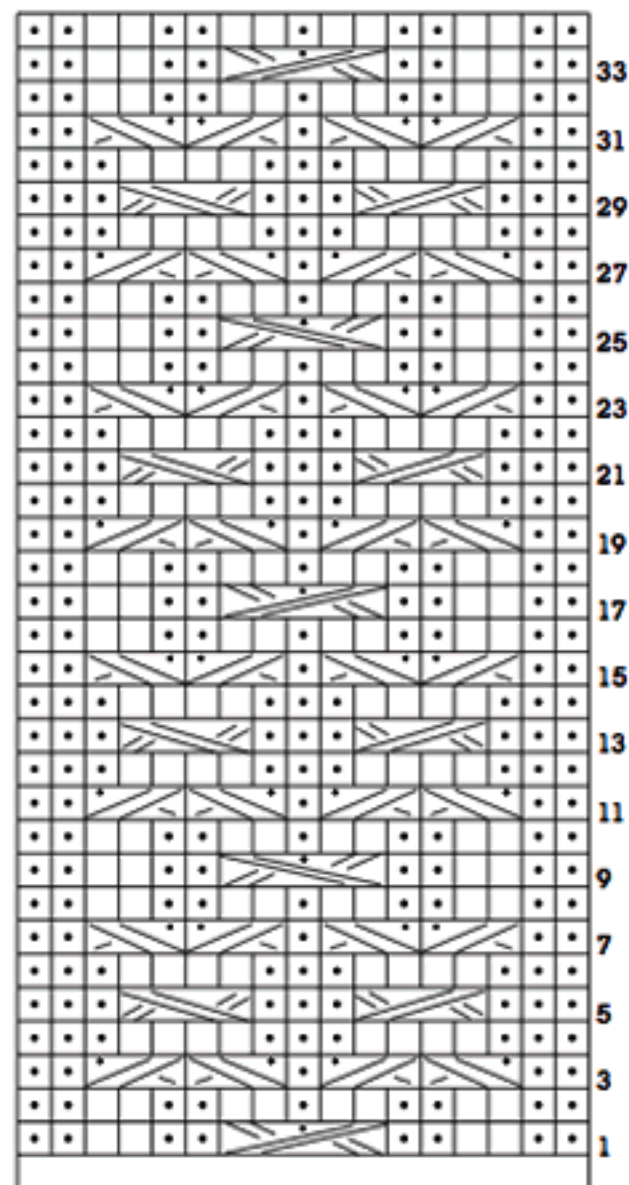
THUMB

Place the first 6 sts from the holder on 1 dpn, the next 7 sts on a second dpn and pick up 7 sts from across the thumb opening on the third dpn. Work these 20 sts in (k2, p2) rib. Work thumb for 8 rows, or desired length. Again, try on the mitt to make sure of the fit. Bind off all sts evenly, leaving the thumb tip free. Weave in all ends, using the ends to close any remaining holes. Block to size.

Four-Rib Braid Cable Chart

-  = K on RS
 = P on RS
 = Slip next st onto cn and hold in back, k2, p1 from cn
 = Slip next 2 sts onto cn and hold in front, p1, k2 from cn
 = Slip 2 sts onto cn and hold in back, k2, k2 from cn
 = Slip 2 sts onto cn and hold in front, k2, k2 from cn
 = Slip 3 sts onto cn and hold in front, k2, slip purl stitch from cn back to left-hand needle and p, k2 from cn
 = Slip 3 sts onto cn and hold in back, k2, slip purl stitch from cn back to left-hand needle and p, k2 from cn

FOUR-RIB BRAID CABLE



17 Stitches

Thumb Charts

- = K on RS
- = P on RS
- M = Make 1 stitch

PRINCESS MITTS RIGHT THUMB GUSSET

PRINCESS MITTS LEFT THUMB GUSSET

