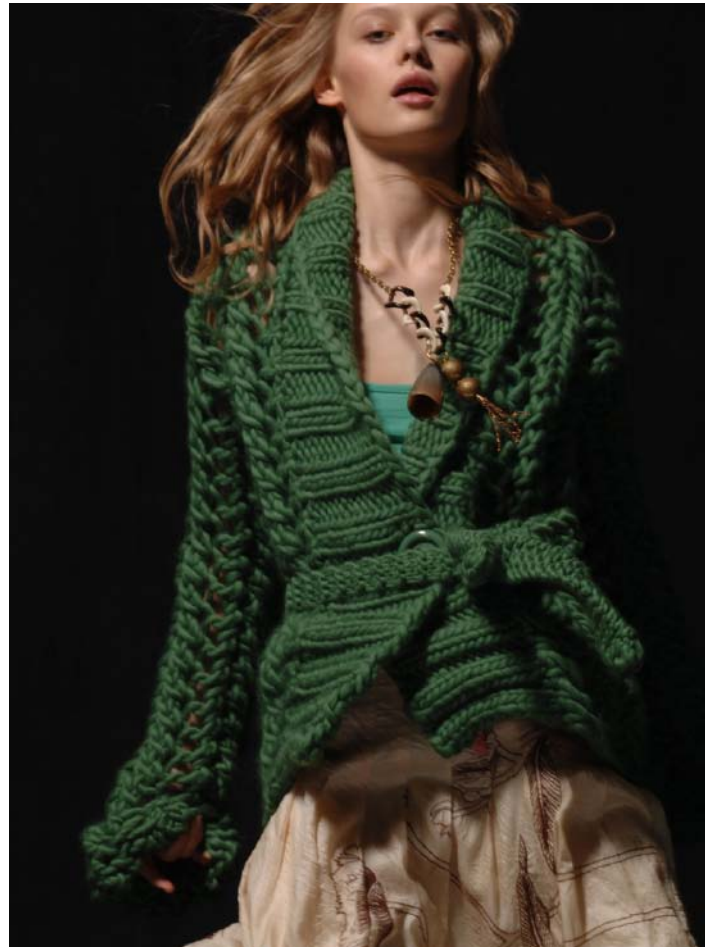
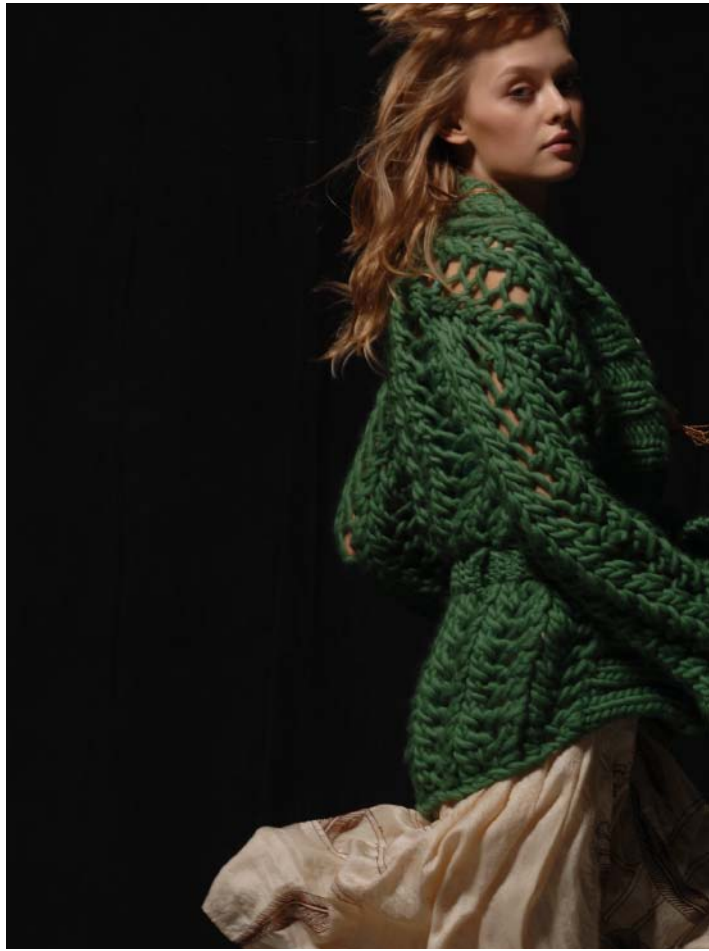


best friend cardigan



Best friends are forever!

This traditional sweater is updated and designed in doll size. Cables and bobbles stand out against a flat purl background and suggest the look of appliqué. English shoulders streamline the contours of the cardigan because the front pieces are longer than the back ones. Exaggerated details, poufs, and big buttons emphasize the small fit. THIS PATTERN STARTS ON PAGE 88.



karate sweater

The deconstructed Karate Sweater's long front merges at the center back to shape the shoulder. Bypassing shoulder seams adds slouch and keeps the dojo stitch pattern continuous. Using extra-large needles softens the thickness created by the dojo stitch pattern. Exaggerated ribbing finishes the opening, creates contrast, and gives structure to this versatile design.

THIS PATTERN STARTS ON PAGE 91.

It's Good to Be Green!

pilot hat and flying gloves



Fly first class with Twinkle's Pilot Hat!

Repeatedly decreasing on each stitch right next to the cable creates the hat's dome shape. Decreased stitches between cables become invisible, and eventually the hat looks like four interwoven cables. To make the flaps, pick up stitches from the edge. A pretty pom-pom tops it off. Keep your hands warm with the matching Flying Gloves. Wrapping yarn around the needle twice is a novel way to increase stitches and avoid bulkiness. To finish and give stability, use garter stitch. THIS PATTERN STARTS ON PAGE 94.

